

Enclosures

The concept of ready boards was introduced in the mid 90's as a rapid way to deploy basic electrical access to a large portion of the community who were without this commodity. Allbro (York) was the first company in South Africa to create a technically sound commercially viable and large scale production for this concept. Allbro remains one of the largest producers of this product while actively working on creating more sophisticated and sustainable distribution methods for basic electrical supply to the community.

Hinges

## 2 Platforms

RB - A

NEW-GEN™

Locks

Handles

Accessories



**NOTE: The RBH platform has been discontinued. New Gen is a completely new concept and is not directly compatible with the accessories in this section. Please refer to page 74**

### Available in different Bulkhead options (or no Bulkhead - No Light switch)

**Standard Bulkhead**

**Slimline Bulkhead**

**CFL only Bulkhead - will not close with standard globes, forcing the consumer to use Low power CFL's**

Rotary Operating Handles

Insulators

Transformer Equipment



Index

Part Number	Description	IP
BUL-60W	60watt Bulkhead Ventilated	3X
BUL-100W	100watt Bulkhead Ventilated	3X

Part Number	Description
BUL-SLIMLINE	Slimline Bulkhead

Part Number	Description	IP
LWB-001	CFL Bulkhead	54

Note: We invented these light fittings specifically for our ready boards but many markets now use them as stand alone light fittings.

Different Plugsets



SA Standard

13A Square Pin

Shucko



SA Euro Socket

Different Mounting Options for Easy Deployment

Compact SMC Backing Board

Large SMC Backing Board with Wiring Tunnel



Rails

Rails with Perspex Meter Mounting Point



Enclosures

Hinges

Locks

Handles

Accessories

Rotary Operating Handles

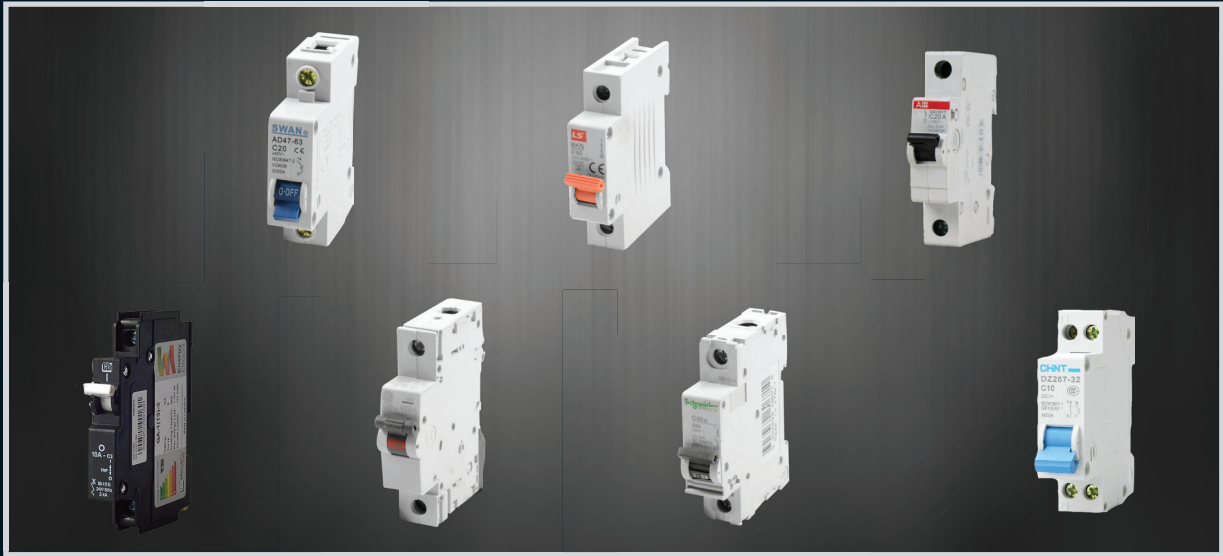
Insulators

Transformer Equipment

Index

- Enclosures
- Hinges
- Locks
- Handles
- Accessories
- Rotary Operating Handles
- Insulators
- Transformer Equipment
- Index

## Different Breaker Options



Swan

LS

ABB

CBI

GE

Schneider

Chint

## Some PRE - configured Options



Part Number	Earth Leakage	MCB'S	No of 3 Pin Switched Socket Outlets	Bulkhead Light Fitting with Switch
RBNGC00ZF0E22	63A	2 X 20A	3	1
RBNG000ZF0E22	63A	2 X 20A	3	-



Part Number	Breakers	Earth Leakage	MCB'S	No of 3 Pin Switched Socket Outlets	Bulkhead Light Fitting with Switch
RBA000ZF0E22	Schneider	63A	1 x 20A	3	-
RBAB00ZF0E22	Schneider	63A	1 x 20A	3	1
RBA000ZT0E22	Chint	63A	1 x 20A	3	-
RBAB00ZT0E22	Chint	63A	1 x 20A	3	1

## Split meter Ready Board



Part Number	Earth Leakage	MCB'S	No of 3 Pin Switched Socket Outlets	Bulkhead Light Fitting with Switch
040-706	63A	1 x 20A	2	-

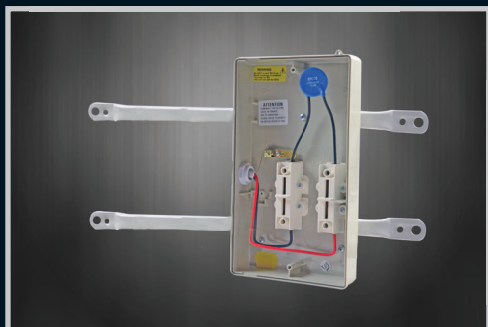
## Universal Base for Pre- payment meters

### Passive With Rails & Plugset



Part Number	Description	Qty per box
PAS	Passive Base with Rails and Plugset	1

### Passive With Rails



Part Number	Description	Qty per box
PAS-1	Passive Base with Rails	1

### Passive



Part Number	Description	Qty per box
PAS-2	Passive Base with Glands and Hole cover	1
PAS -3	Passive base with No Rails, No Glands, No Hole cover	1

Enclosures

Hinges

Locks

Handles

Accessories

Rotary Operating Handles

Insulators

Transformer Equipment

Index

RB Ready Board	Configuration	Bulkhead	Globe	Mounting	Plug Type	Breaker Type	Main Switch/Iso	Earth Leakage/Main	0 None
	<b>A</b> Vertical 	<b>0</b> No Bulkhead	<b>0</b> None	<b>0</b> None	<b>Z</b> SA type 	<b>S</b> Swan 	<b>0</b> None	<b>E</b> 63EL 63A DP EL Isol 	<b>0</b> None
	<b>NG</b> New Gen 	<b>B</b> Standard Bulkhead 	<b>G</b> Globe 14w CFL 	<b>L</b> Large SMC backing board 	<b>S</b> Shuko type 	<b>A</b> ABB 	<b>1</b> 1 x 25A MCB	<b>C</b> GL breaker combination 	<b>1</b> 1 x 10A SP MCB
		<b>C</b> CFL-Round 	<b>L</b> LED Lamp 	<b>S</b> Small SMC backing board 	<b>B</b> BS type 	<b>L</b> LS 	<b>2</b> 1 x 10A MCB	<b>L</b> 40A EL 	<b>2</b> 1 x 20A SP MCB
		<b>S</b> Slimline 		<b>R</b> Rails 	<b>E</b> Euro type 	<b>G</b> GE 	<b>3</b> 1 x 16A 2P MCB		<b>3</b> 1 x 32A SP MCB
		<b>X</b> 5m Lead with Lampshade 		<b>P</b> Rails with perspex mounting 	<b>Note:</b> New Gen has an additional 3 way - 2 pin socket configuration 	<b>C</b> CBI / Din 	<b>4</b> 1 x 40A MCB		<b>4</b> 1 x 6A SP MCB
		<b>M</b> 3m lead with Bulkhead 		<b>E</b> Rails with Passive 		<b>B</b> CBI / Sam 	<b>5</b> 1 x 50A MCB		<b>5</b> 1 x 63A SP MCB
		<b>N</b> 2m lead with Bulkhead 		<b>M</b> Mounting Plate 		<b>F</b> Schneider 	<b>6</b> 1 x 63A MCB		<b>6</b> 1 x 16A SP MCB
				<b>G</b> Rails with 4x4 plugset 		<b>T</b> Chint 	<b>7</b> 1 x 32A MCB		<b>7</b> 1 x 25A SP MCB
						<b>E</b> Lesco 			
						<b>0</b> None			

**Note:**

Please note that number indicates position & current rating of breaker.

**Example:**

(22) = 2 x 20A  
(212) = 1 x 20A, 1 x 10A, 1 x 20A

## How the coding system works

### Example:

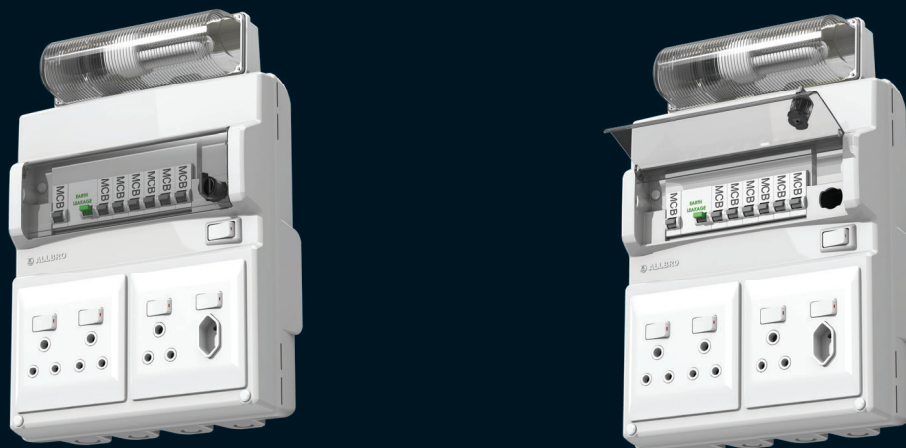
You are looking for the following requirements in your Ready Board:

- Vertical configuration
- Standard Bulkhead
- With a Globe
- Large mounting plate
- SA type plug
- Swan breakers
- No main switch
- Earth Leakage
- 2 x 20A SP MCB
- 1 x 16A SP MCB
- 1 x 32A SP MCB

Your code is then created using the table on the previous page and looks like this:

# RBABGLZS0E2263

\* Should you need any assistance please contact our sales department.



Enclosures

Hinges

Locks

Handles

Accessories

Rotary Operating  
Handles

Insulators

Transformer  
Equipment

Index

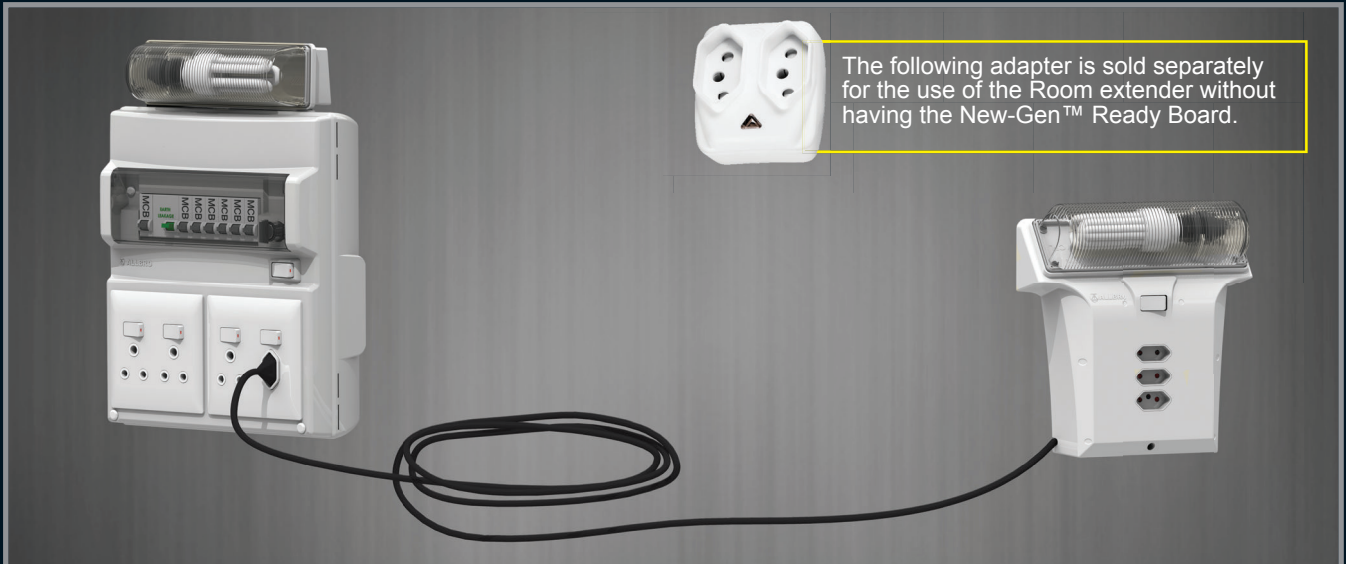
Enclosures

The New Gen ready board System is a world first expandable ready board system. The New Gen ready board comes paired with a CFL bulkhead and is fitted with an LED globe. The key feature that makes this ready board system unique is the “room extender” can be attached using a daisy chain method throughout various rooms in the house giving access to multiple plug points as well as a light. The room extenders are available in different cord lengths: 2.7m, 6.7m and 10.7m to ensure that there is enough cord for installation in different applications. The device plate at the back of the room extender makes installation easy & efficient as it can be done without the use of an electrician.

Hinges

Locks

Handles



Accessories

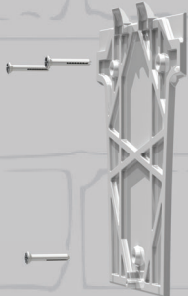
Part Number	Description	H (mm)	W (mm)	D(mm)	Cable Length
040-959	Room Extender Complete	257	240	83	2.7m
040-960	Room Extender Complete	257	240	83	6.7m
040-961	Room Extender Complete	257	240	83	10.7m
P/S060	Plug in Adaptor 2 x 16A / 6A Slimline	53	50	38	-

**PLEASE NOTE:**  
 - The combined length of cables assembled in any chain should not exceed 25m.  
 - The circuit should be connected to a Distribution board with a 16A circuit breaker.

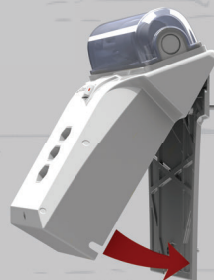
Rotary Operating Handles

## Room Extender Mounting System

1) Mount the mounting plate to the wall using 3x6mm screw/plug.



2) Hook the first unit at the top as shown below and close it



3) Cable can be spooled at the back of the Room Extender to keep cable neat and tidy



4) Plug the first unit into the New Gen ready board



5) Repeat steps 1 and 2 and connect the second unit into the first unit as shown below



Insulators

Transformer Equipment

Index